

1

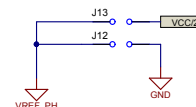
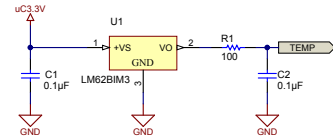
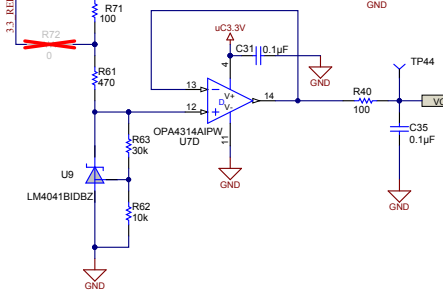
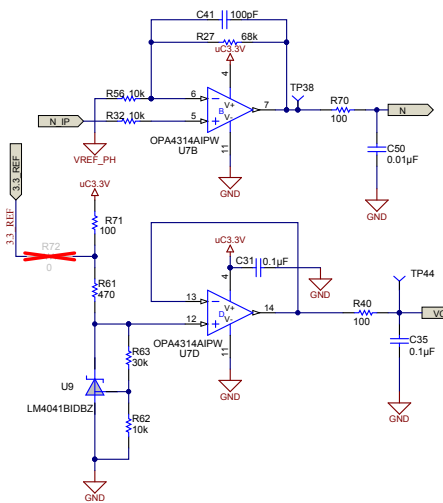
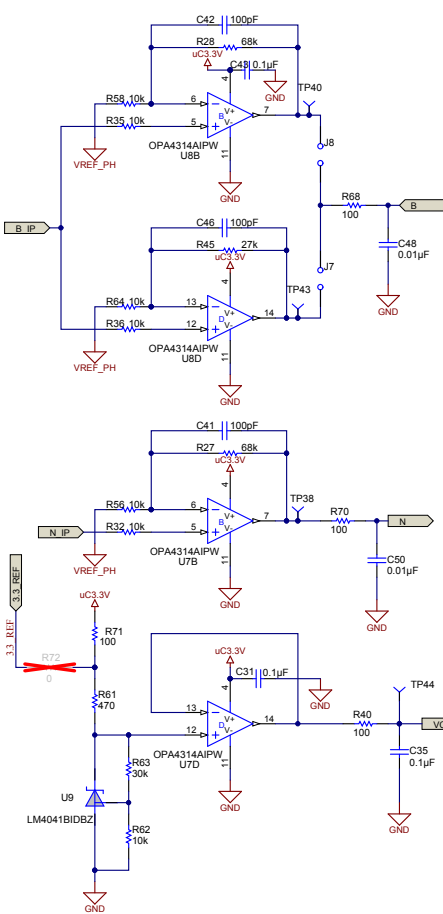
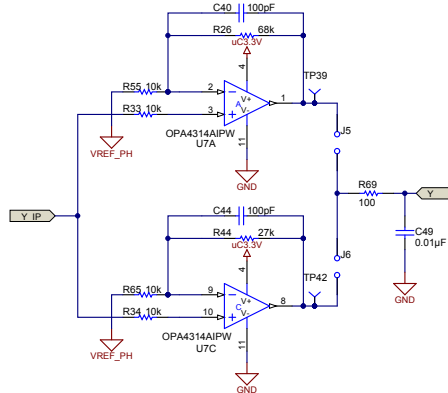
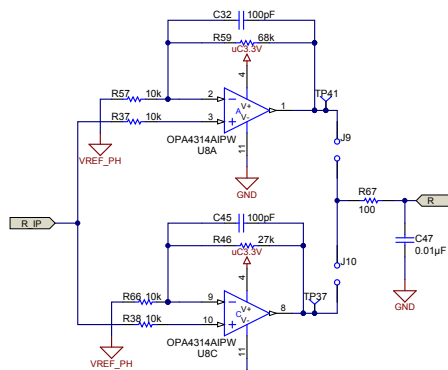
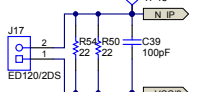
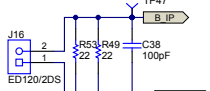
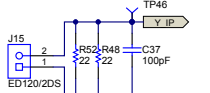
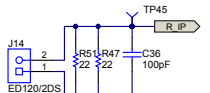
2

3

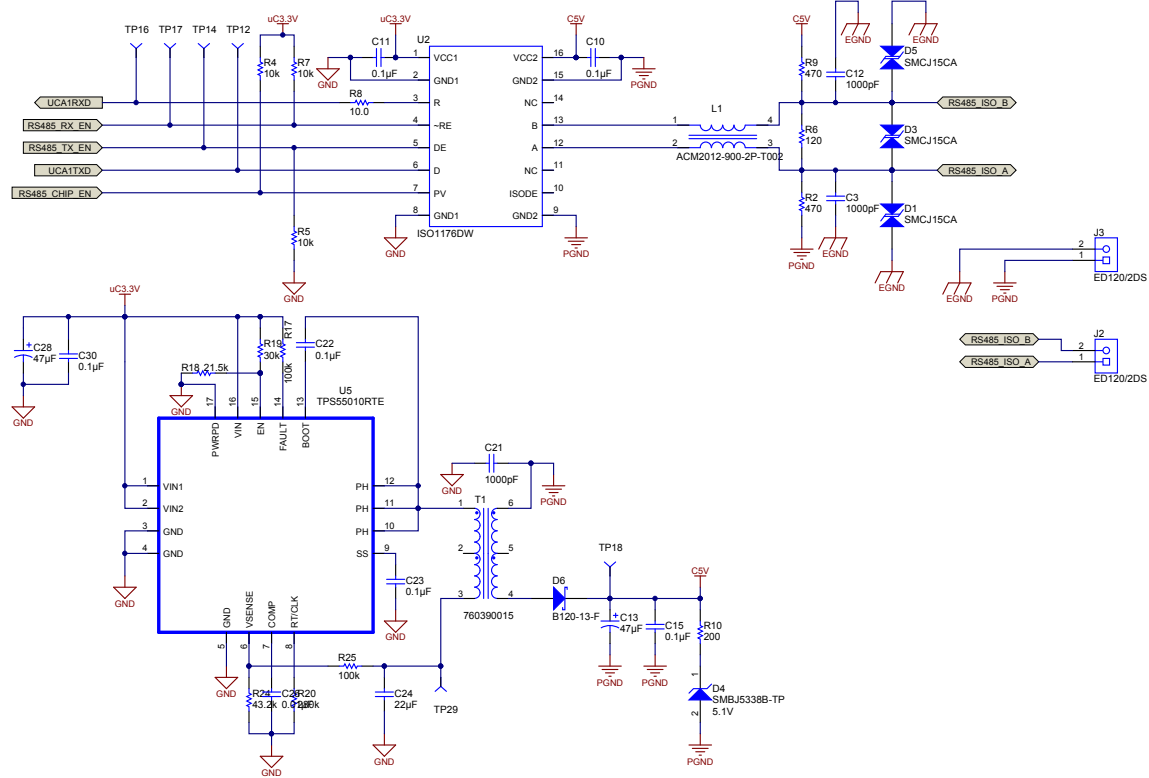
4

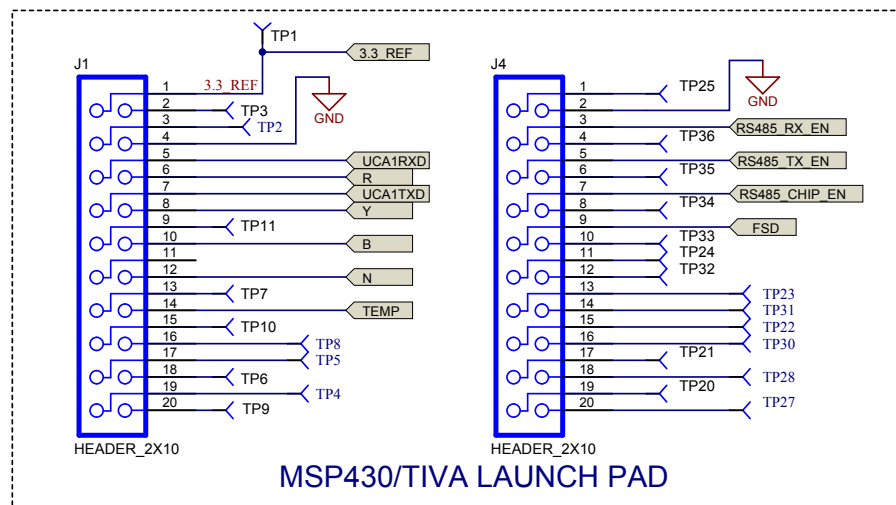
5

6



Texas Instruments and/or its licensors do not warrant the accuracy or completeness of this specification or any information contained therein. Texas Instruments and/or its licensors do not warrant that this design will meet the specifications, will be suitable for your application or fit for any particular purpose, or will operate in an implementation. Texas Instruments and/or its licensors do not warrant that the design is production worthy. You should completely validate and test your design implementation to confirm the system functionality for your application.





Texas Instruments and/or its licensors do not warrant the accuracy or completeness of this specification or any information contained therein. Texas Instruments and/or its licensors do not warrant that this design will meet the specifications, will be suitable for your application or fit for any particular purpose, or will operate in an implementation. Texas Instruments and/or its licensors do not warrant that the design is production worthy. You should completely validate and test your design implementation to confirm the system functionality for your application.

Number: [TIDA-00128](#) | Rev: [E2](#)
 SVN Rev: Not in version control
 Drawn By:
 Engineer: [Enter name of project lead](#)

Designed for: [Public Release](#) | Mod. Date: 1/28/2014
 Project Title: [TIDA-00128 OPAMP BASED MCCB ETU](#)
 Sheet Title:
 Assembly Variant: 001 | Sheet: 6 of 7
 File: [Pg6.SchDoc](#) | Size: A4
 Contact: <http://www.ti.com/support>

**TEXAS
INSTRUMENTS**
<http://www.ti.com>
 © Texas Instruments 2013



Variant	Label Text
001	ChangeMe!
002	ChangeMe!

PCB Label

ZZ1
Label Assembly Note
 This Assembly Note is for PCB labels only

Assembly Note
These assemblies are ESD sensitive, ESD precautions shall be observed.

ZZ3
Assembly Note
These assemblies must be clean and free from flux and all contaminants. Use of no clean flux is not acceptable.

ZZ4

Assembly Note

These assemblies must comply with workmanship standards IPC-A-610 Class 2, unless otherwise specified.